



**PLEASE
FIX BROKEN
HEAD
LIGHTS
& LOWER
HIGH BEAMS
WHEN
PASSING
OTHER
VEHICLES**

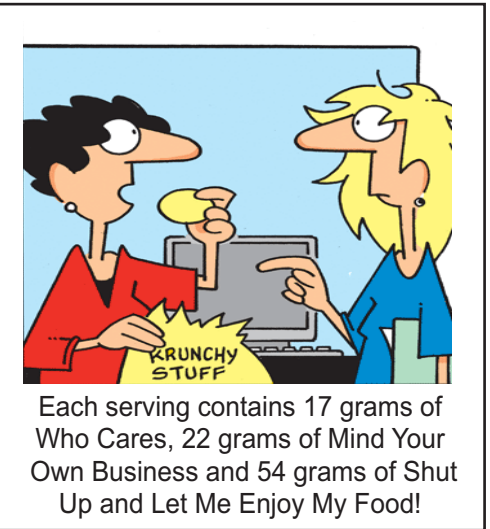
HEADLIGHTS: First and foremost, it's not safe to drive with a broken headlight. Driving with only one headlight significantly reduces your visibility which impairs your ability to fully see road; this can become especially dangerous if you encounter unexpected obstacles. If you're driving around in a vehicle that has only one working headlight, chances are an officer will stop you. This applies even if you are driving your car with two working parking lights illuminating the road. You can receive a citation for violating the law.

HIGH BEAMS: If you are driving with your high-beam lights on, you must dim them at least 500 ft from any oncoming vehicle, so you don't blind the oncoming driver. You must use low-beam lights if you are within 200-300 ft of the vehicle you are following.

On country roads, switch to low beams when you come to a curve or hilltop so you can see oncoming headlights and won't blind oncoming drivers. If you can't see any headlights, switch back to high beams.

Don't use high-beam headlights in foggy conditions. They won't shine through the fog but just reflect the light back in your eyes, making it worse for you and other drivers. Use low-beams. In really dense fog, use front fog lights in addition to your low-beams if you have them.

If the driver of an oncoming vehicle fails to dim the lights, look down toward the right side of the road to avoid being blinded. You should be able to see the edge of the lane or the painted edge line and stay on course until the vehicle passes.



Each serving contains 17 grams of Who Cares, 22 grams of Mind Your Own Business and 54 grams of Shut Up and Let Me Enjoy My Food!

~ With the Spirit ~
 "Of the increase of His government and peace there will be no end, upon the throne of David and over His kingdom, to order it and establish it with judgment and justice from that time forward, even forever more. The zeal of the Lord of hosts will perform this."
Isaiah 9:7

Kris' Custom Renos
 Kris Michaluk
ROOFING & RENO SPECIALIST
 Call for a Free Estimate
 Phone: 204-449-2386
 or 204-302-0009 leave msg

STAND icu	YOU DID IT MIND	AALLLL
house PRAIRIE	sentenc_	1. DRACULA 2. DRACULA 3. DRACULA

iSpy Answers

7	6	1	10	5	8
2	7	3	9	4	4
1	5	4	9	2	8

The AROUND TOWN

A New Edition Online Wednesdays

NEW EMAIL ADDRESS: thearoundtown2020@gmail.com



Vol. 01 No. 40 We're all doing our best. Stay safe! January 13, 2021

Peter Fredrick Davidson
 Happy 100th
 Birthday
 January 21,
 2021

Love & Best Wishes from your sister
 Angelica & all of your extended family of nieces and nephews.
 Hope you have a very special day.

Since we are unable to celebrate with Peter in person,
 we encourage relatives & friends to send him a card at
 Box 356, Ashern, MB R0C 0E0

BE SEEN ONLINE
**SOCIAL MEDIA
 ADVERTISING
 & ONLINE
 PROMOTION**

Promote yourself via The Around Town Online
GET FEATURED ON:



Click each icon above to visit our pages and groups

**WE NOW
 HAVE
 GAS!**
 Open
 11 am - 7 pm
 204-768-2749

WOW!

Narrows Sunset Lodge Inc.

**RV BOARDING
 KENNEL &
 PET FOOD SALES**
 204-739-3445

COMPUTER TUTOR
 Professional Computer Support & Repair
 204-471-5818

www.computertutorpetra.ca

**Alcoholics
 Anonymous
 Contact #'s**

Lundar:
 (204) 739-8093
Eriksdale:
 (204) 739-6454
 Toll Free #:
 1-(877) 942-0126
Central office:
 (204) 943-6051

"IN ORDER TO EMPATHIZE WITH SOMEONE'S EXPERIENCE YOU MUST BE WILLING TO BELIEVE THEM AS THEY SEE IT AND NOT HOW YOU IMAGINE THEIR EXPERIENCE TO BE"

-BRENÉ BROWN



Bergner
Auction Service
(204)-768-2669

This could be YOUR ad!
Half ad (2.6" w x 1" h)
\$11.90 + gst = \$12.50
blueraven@mymts.net

Double-Speak Proverbs - Read the descriptions provided below and try to guess which proverb (old saying) they each represent. Don't worry if you say the "proverb" in a slightly different way than shown in these answers. Over the years, there are many slightly different ways of expressing an old proverb!

1. If a large solid-hoofed mammal becomes available to you without compensation, refrain from casting your faculty for seeing into the oral cavity of such a creature.
2. Each vaporous mass suspended in the firmament has an interior decoration of metallic hue.
3. It is not advantageous to place the sum total of your barnyard collections into the same wicker receptacle.
4. Feathered bipeds of a kindred mind in their segregated environment associate with a high degree of amiability.
5. Deviation from the ordinary or common routine of existence is that which gives zest to man's cycle of existence.



8 STEPS TO BECOME MORE RESILIENT

<p>1</p> <p>ACCEPT CHANGE</p> <p>Find ways to become more comfortable with change.</p>	<p>2</p> <p>BECOME A CONTINUOUS LEARNER</p> <p>Learn new skills, gain new understanding and apply them in times of change.</p>	<p>3</p> <p>TAKE CHARGE</p> <p>Take charge of your own career and your own development.</p>	<p>4</p> <p>FIND YOUR SENSE OF PURPOSE</p> <p>Helps you to assess setbacks within the framework of a broader perspective.</p>
<p>8</p> <p>SKILL SHIFT</p> <p>Reframe how you see your skills, talents and interests.</p>	<p>7</p> <p>REFLECT</p> <p>Reflection fosters learning, new perspective and self-awareness.</p>	<p>6</p> <p>CULTIVATE RELATIONSHIPS</p> <p>Develop and nurture a broad network of personal and professional relationships.</p>	<p>5</p> <p>PAY ATTENTION TO SELF-IDENTITY</p> <p>From your identity apart from your job.</p>

SUDOKU

Rules: Insert a digit from 1 to 9 into each cell so that no digit repeats in any row, column, or bold region.

Answer String: Enter the row/column marked "A", followed by a comma, followed by the row/column marked "B". Rows are entered from left to right and columns from top to bottom.

				1	2	3	
1	2	3		8		4	
8		4		7	6	5	
7	6	5					
					1	2	3
	1	2	3		8		4
	8		4		7	6	5
	7	6	5				

SNOWMAN I SPY